

# 機電整合研究所 Institute of Mechatronic Engineering

## 先進感知與系統分析 Advanced Perception and Systems Analysis

### 機器感知實驗室 Machine Perception Lab.



O: 綜科 323  
#2033

L: 綜科 525-4  
#2048

許志明 教授  
Prof. Chih-Ming Hsu

台灣大學電機系  
National Taiwan University  
Department of Electrical  
Engineering

[jmshiu@ntut.edu.tw](mailto:jmshiu@ntut.edu.tw)

#### 研究領域

智慧車與駕駛輔助系統、  
機器人環境感知技術、智  
慧型運輸系統、智慧型製  
造系統、電腦視覺與影像  
處理、生理感測與訊號處  
理

#### 近期研究主題

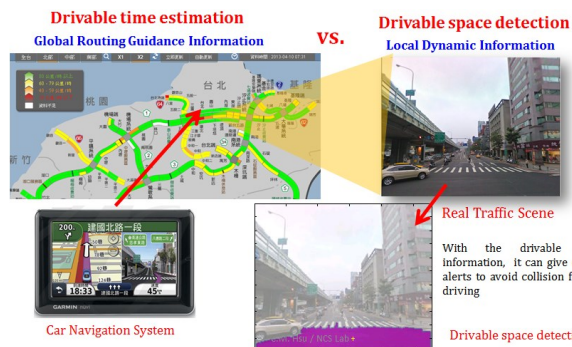
- 前瞻駕駛道路環境偵測
- 機器人環境感知與識別
- 非侵入式駕駛疲勞感測
- 高承載紅外線辨識系統

#### Research Area

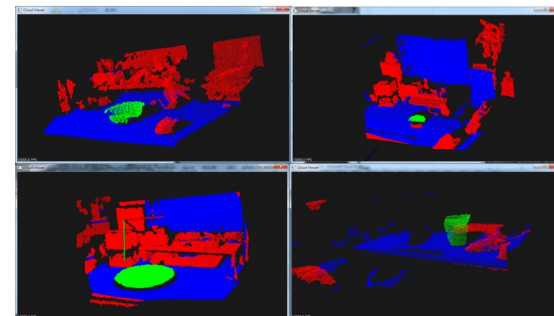
Intelligent vehicle and driver  
assistance systems, Intelligent  
transportation systems, Intelligent  
manufacturing systems, computer  
vision and image processing,  
Physiological sensing and signal  
processing

#### Recent Topics

- Drivable space detection systems
- Scene understanding for mobile  
robot
- Physiological sensing and fatigue  
detection
- High occupancy vehicle detection



可行駛空間偵測系統  
Drivable space detection systems



移動型機器人環境感知與識別  
Scene understanding for mobile robot



生理感知與疲勞偵測系統  
Physiological sensing and fatigue detection